

2 way ball valve S4

Electric actuator ER20 / ER35 PREMIER

Electric actuator ER PREMIER



This document does not constitute a guarantee, it is for initial information purposes only. The product range is continually upgraded, the designs and types therefore only reflect the state of the art at the time of printing. Subject to technical modifications!

General:

- Material: PVC-U / PP / PVDF
- Seal material: EPDM / FPM
- Ball seating joint: PTFE
- Dimensions: DN10 – DN80
d16 – d110
d 3/8" – d4"

Connector types:

PVC

- Solvent socket DIN
- Solvent spigot DIN
- Threaded socket BSP
- Fixed flange DIN

PP

- Fusion socket DIN
- Fusion spigot DIN

PVDF

- Fusion socket DIN
- Fusion spigot DIN

Further connector types on request

Operating pressure:

- PVC / PVDF
DN10 d16 d3/8" – DN65 d75 d2 1/2" PN16
DN80 d90 d3" PN10
DN80 d110 d4" PN6
- PP
DN10 d16 d3/8" – DN65 d75 d2 1/2" PN10
DN80 d90 d3" – DN80 d110 d4" PN6

Technical features:

Ball valve

- Double sided blocked ball
- Double shaft sealing

Electric actuator

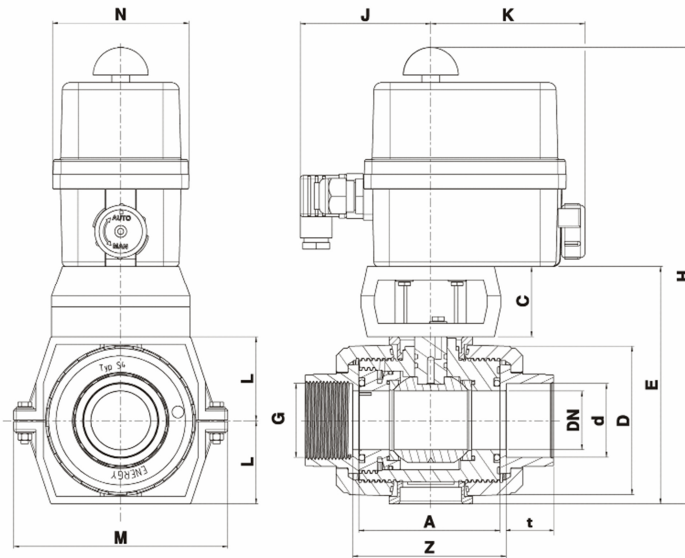
- Adjustable limit switch*
- Mechanical travel stops*
- Secured manual override
- Protection IP65
- Torque limiter
- Position indicator

* technical details see page 6

2 way ball valve S4

Electric actuator ER20 / ER35 PREMIER

Dimensions:



Connector types

PVC solvent socket / threaded socket
PP / PVDF fusion socket

		ER20							ER35			
	DN	10	15	20	25	32	40	50	65	80	80	
	d	16	20	25	32	40	50	63	75	90	110	
valve bracket and actuator	C	38	38	38	38	48	48	48	72,5	72,5	72,5	
	E	104	104	118	122	150	160	176	242,5	272,5	272,5	
	H	252	252	266	270	298	308	324	418,5	448,5	448,5	
	J	90	90	90	90	90	90	90	98	98	98	
	K	107	107	107	107	107	107	107	107	107	107	
	L	33	33	40	42	51	56	64	84	100	100	
	M	113	113	113	133	144	144	144	204	204	204	
	N	92	92	92	92	92	92	92	128	128	128	
ball valve	PVC	A	62	62	70	74	84	95	109	137	163	163
		D	53	53	63	70	85	101	124,5	155	188	188
		Z	68	67	76	80	91	103	120	148	180	173
		t _{KM} ¹	16,5	16,5	19,5	22,5	26,5	31,5	38,5	45	55,5	64
		G	3/8"	1/2"	3/4"	1"	1 1/4"	1 1/2"	2"	2 1/2"	3"	-
		PN	16	16	16	16	16	16	16	16	10	6
	PP	A	62	62	69	73	83	94	108	133	160	160
		D	53	53	64	71	84	100	120,5	155	187	187
		Z	71	68	78	84	97	113	136	162	211	211
		t _{SM} ²	14,5	16	17,5	19,5	22	25,5	29	34,5	38,5	42
	PVDF	A	62	62	69	73	83	94	108	133	160	160
		D	52,5	52,5	63	70	85,5	98	118	151	183	183
Z		71	68	78	84	97	113	136	162	207	170	
t _{SM} ²		14,5	16	17,5	19,5	22	25,5	29	34,5	38,5	41,5	
	PN	16	16	16	16	16	16	16	16	10	6	

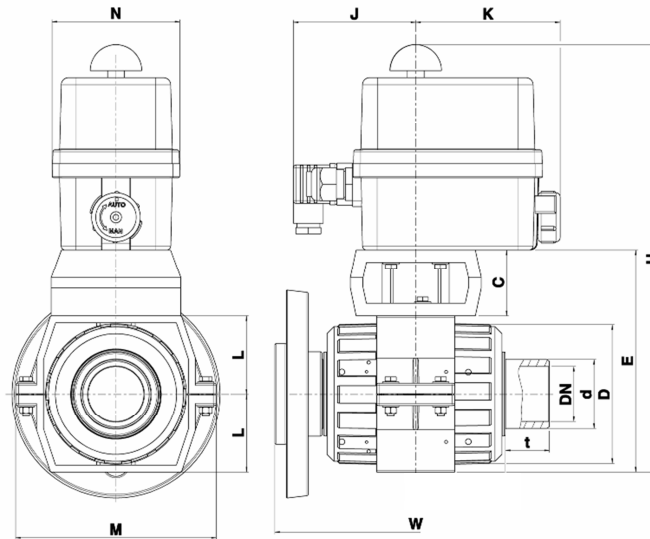
¹ KM = solvent socket

² SM = fusion socket

Dimensions in mm

2 way ball valve S4

Electric actuator ER20 / ER35 PREMIER



Connector types

PVC solvent spigot / fixed flange
PP / PVDF fusion spigot

		ER20							ER35			
	DN	10	15	20	25	32	40	50	65	80	80	
	d	16	20	25	32	40	50	63	75	90	110	
Armaturehalterung und Antrieb	C	38	38	38	38	48	48	48	72,5	72,5	72,5	
	E	104	104	118	122	150	160	176	242,5	272,5	272,5	
	H	252	252	266	270	298	308	324	418,5	448,5	448,5	
	J	90	90	90	90	90	90	90	98	98	98	
	K	107	107	107	107	107	107	107	107	107	107	
	L	33	33	40	42	51	56	64	84	100	100	
	M	113	113	113	133	144	144	144	204	204	204	
	N	92	92	92	92	92	92	92	128	128	128	
Kugelhahn	PVC	D	53	53	63	70	85	101	124,5	155	188	188
		t_{ks}^1	17	17	20	22,5	26,5	31,5	38,5	45	52	64,5
		W	120	130	150	160	180	200	230	290	310	350
		PN	16	16	16	16	16	16	16	16	10	6
	PP	D	53	53	64	71	84	100	120,5	155	187	187
		t_{ss}^2	15,5	20,5	25,5	27	30	33,3	40,8	53	42,2	48,7
		PN	10	10	10	10	10	10	10	10	6	6
	PVDF	D	52,5	52,5	63	70	85,5	98	118	151	183	183
		t_{ss}^2	15,5	20,5	25,5	27	30	33,3	70,8	53	42	57
		PN	16	16	16	16	16	16	16	16	10	6

Dimensions in mm

¹ SSP = solvent spigot

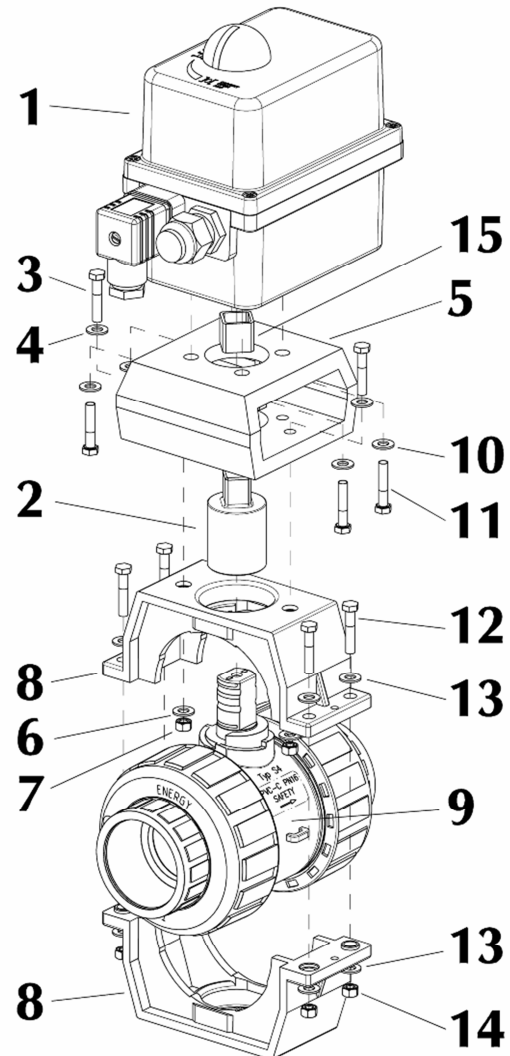
² FSP = fusion spigot

2 way ball valve S4

Electric actuator ER20 / ER35 PREMIER

Exploded drawing:

- 01. ER electric actuator
- 02. Clutch
- 03. Hexagon screw
- 04. Toothed washer
- 05. Console
- 06. Toothed washer
- 07. Hexagon nut
- 08. Valve bracket
- 09. Ball valve
- 10. Toothed washer
- 11. Hexagon socket screw
- 12. Hexagon screw
- 13. Washer
- 14. Hexagon nut
- 15. Reduction (ER35)



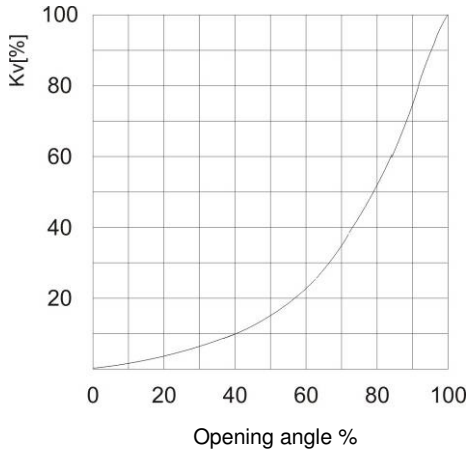
2 way ball valve S4

Electric actuator ER20 / ER35 PREMIER

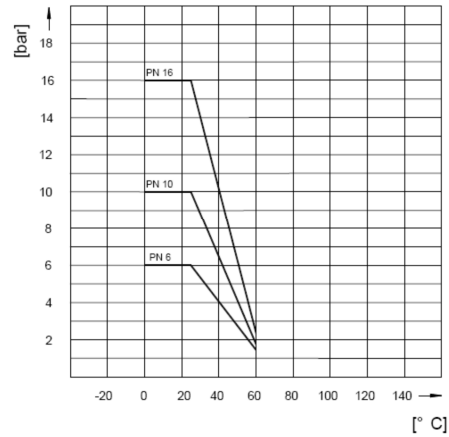


Diagrams:

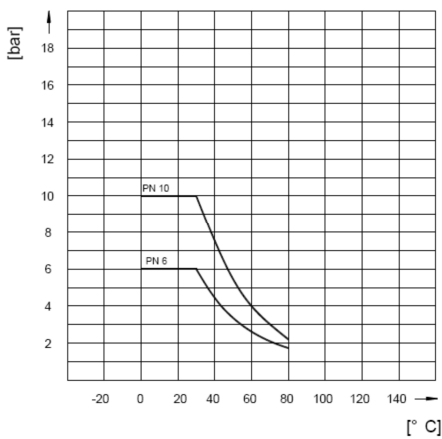
Flow characteristics



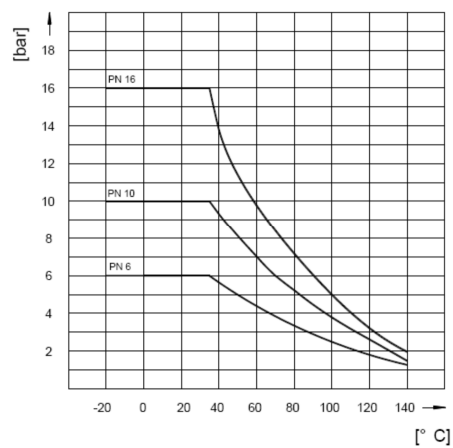
Pressure-Temperature-Diagram – PVC-U



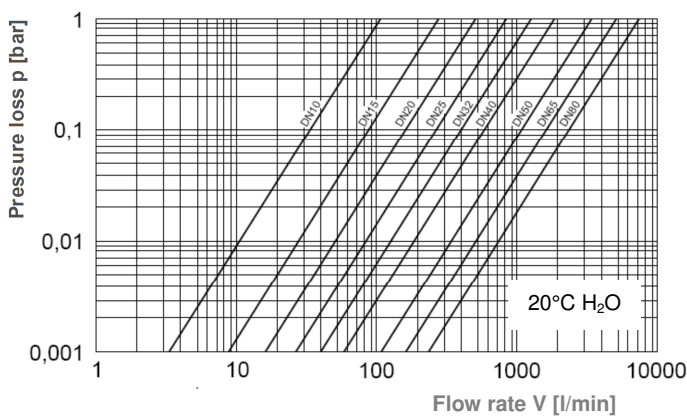
Pressure-Temperature-Diagram - PP



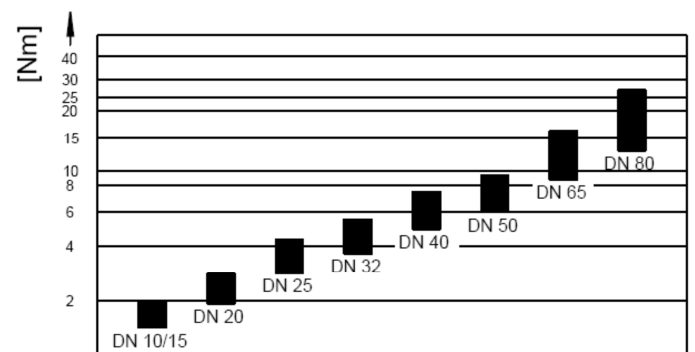
Pressure-Temperature-Diagram- PVDF



Pressure loss diagram



Torque



2 way ball valve S4

Electric actuator ER20 / ER35 PREMIER



Technical data electric actuator:

Electric actuator		
Type	ER20	ER35
Torque	20Nm	35Nm
Voltages	90 - 240V 50/60Hz (90 – 350V DC) 24V 50/60Hz (24V DC)	
Operating time	13s	8s
Power	15W	45W
ISO flange	F03-F04-F05	F05-F07
Star drive nut	14	22
Limit switches	2 limit switches preadjusted	
	2 position indicators	
Mechanical Stop	90°	
Duration duty	30%	
Rotation angle	90°	
Protection	IP65	
Temperatur	-10°C bis +55°C	
Weight	1 kg	2,1 kg